

# NET SatisFAXtion™ 8.6

## Brooktrout Hardware

### Installation Guide

TruFax Series RoHS (lead-free) Analog Fax Boards

TR1034 Series Analog Fax Boards

TR1034 Series Digital Fax Boards

# 8.6

#### Contents

Installing Brooktrout Hardware . . . . .	2
Installing NET SatisFAXtion . . . . .	2
Upgrading from a previous version of NET SatisFAXtion (For a new install, skip to step 4) . . . . .	4
Installing Brooktrout “Boston” Drivers and Configuring NET SatisFAXtion . . . . .	4
Loading the NET SatisFAXtion Server and Finishing the Install. . . . .	9



## 1. Installing Brooktrout Hardware

Power off your server and install the TR1034 or TruFax card.

Power the server on. The Windows Found New Hardware wizard will start. The Brooktrout drivers cannot be installed at this time. Click Cancel.



Click Cancel.

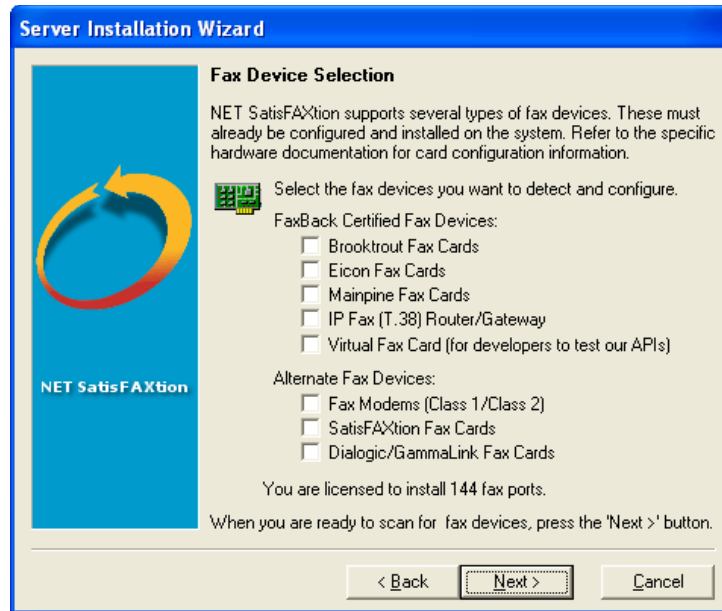
You are now ready to install NET SatisFAXtion.

**IMPORTANT!** The NET SatisFAXtion installer will not detect your card. Install NET SatisFAXtion without any devices, and then use the `C:\Program Files\NET SatisFAXtion\bos_man_setup.exe` program to set up your card.

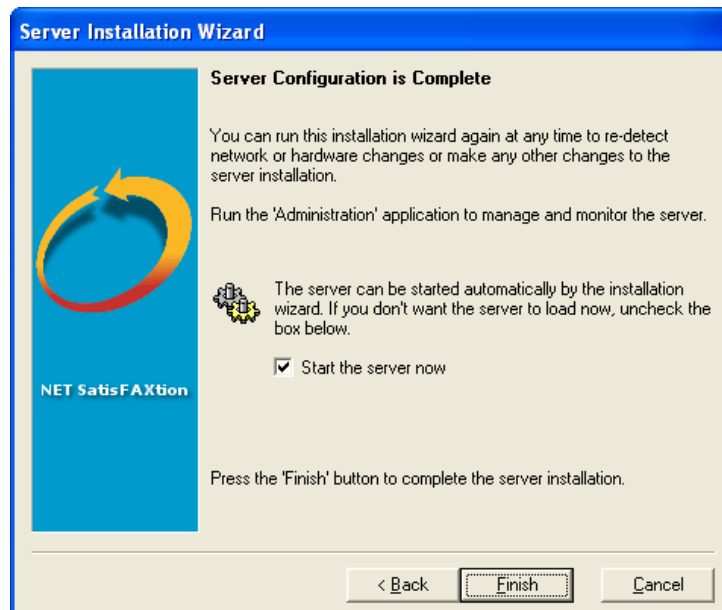
## 2. Installing NET SatisFAXtion

Install NET SatisFAXtion according to the normal instructions. However, there are some steps that must be changed:

Setup will ask you to identify what hardware you have installed. Select any Dialogic (Brooktrout TR1034).



At the very end of the install, Setup will prompt you to load the NET SatisFAXtion server. Uncheck the “Start the server now,” the Brooktrout drivers must be loaded before starting NET SatisFAXtion.



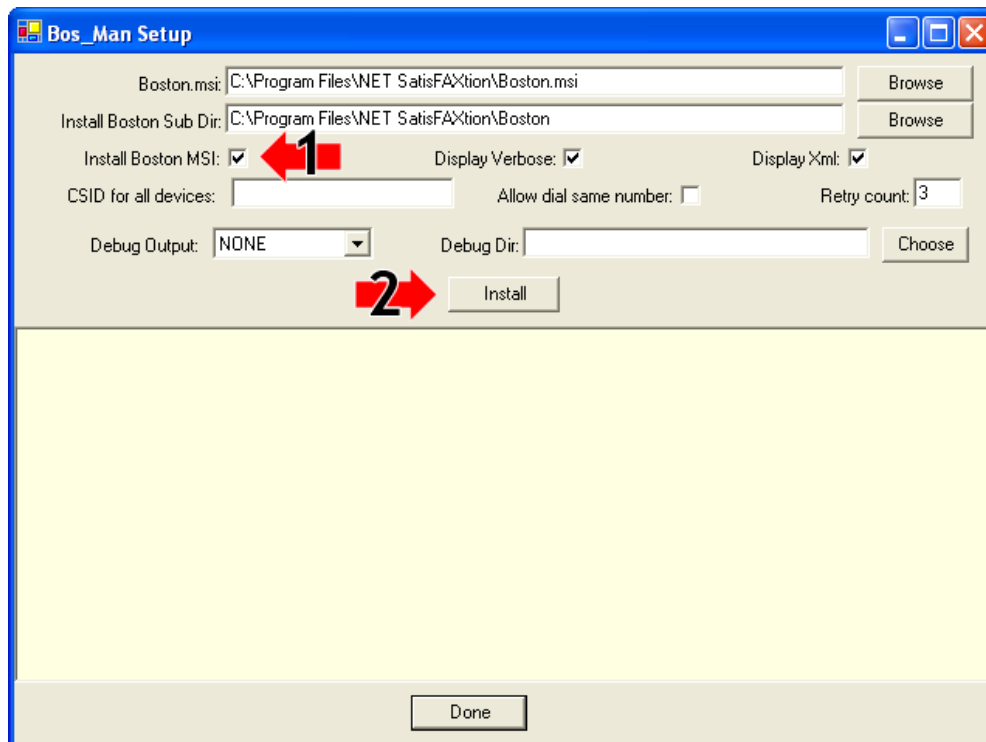
### 3. Upgrading from a previous version of NET SatisFAXtion (For a new install, skip to step 4)

NET SatisFAXtion 8.6x uses a newer SDK from Dialogic. The older version must be uninstalled using Add/Remove Programs. Remove the Brooktrout System Software from Add/Remove programs. In some cases this will be called Cantata System Software. It is recommended to reboot the machine after uninstalling the Brooktrout driver. Failure to do so has resulted in difficulties installing the new driver, typically requiring a reboot.

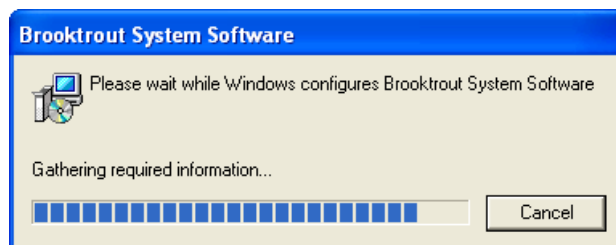
### 4. Installing Brooktrout “Boston” Drivers and Configuring NET SatisFAXtion

NET SatisFAXtion must be completely installed but with no fax ports configured. To configure the ports, run the utility in the root of the NET SatisFAXtion folder called “bos\_man\_setup.exe”. By default, it is `C:\Program Files\NET SatisFAXtion\bos_man_setup.exe`.

Check the “Install Boston MSI” checkbox (1), and click Install (2).



The Brooktrout installer will now run.

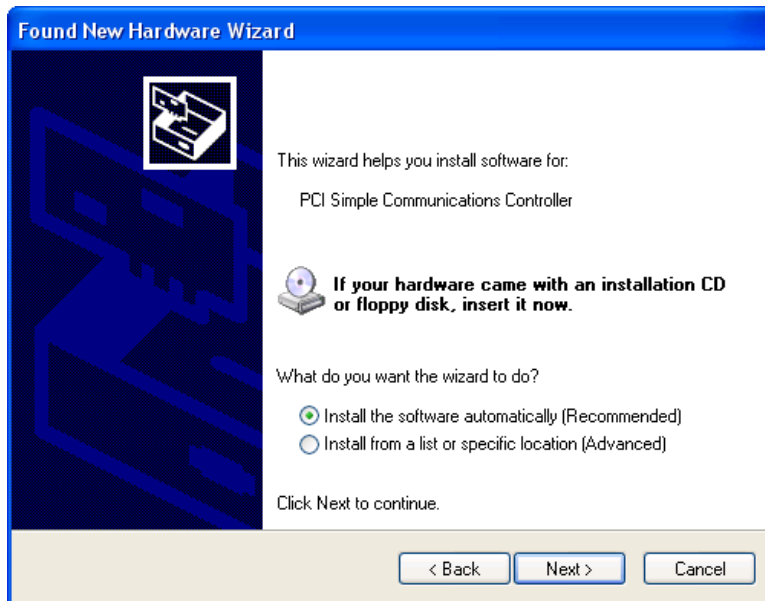


After a minute the Windows Found New Hardware will then run.



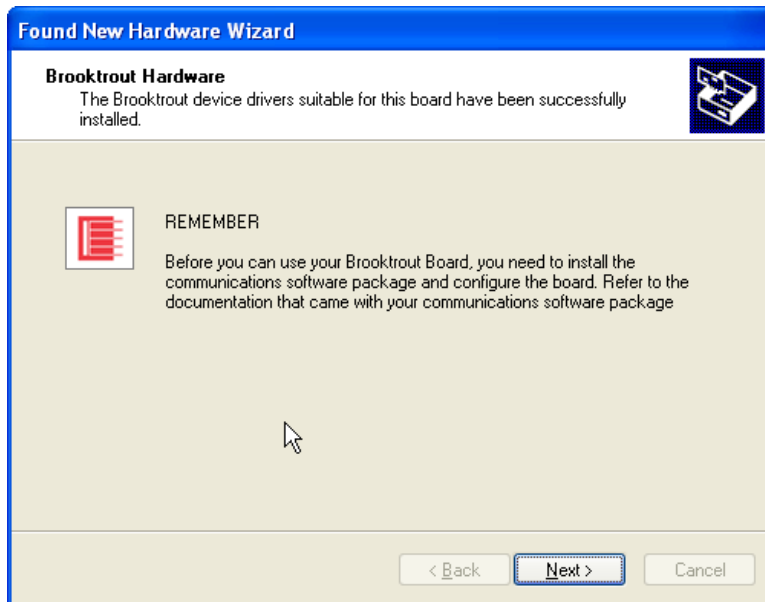
Windows Update does not have the correct drivers. Select “No, not this time,” and click Next.

The Brooktrout installer has already copied the correct files to the Windows directory. You can select “Install software automatically.”

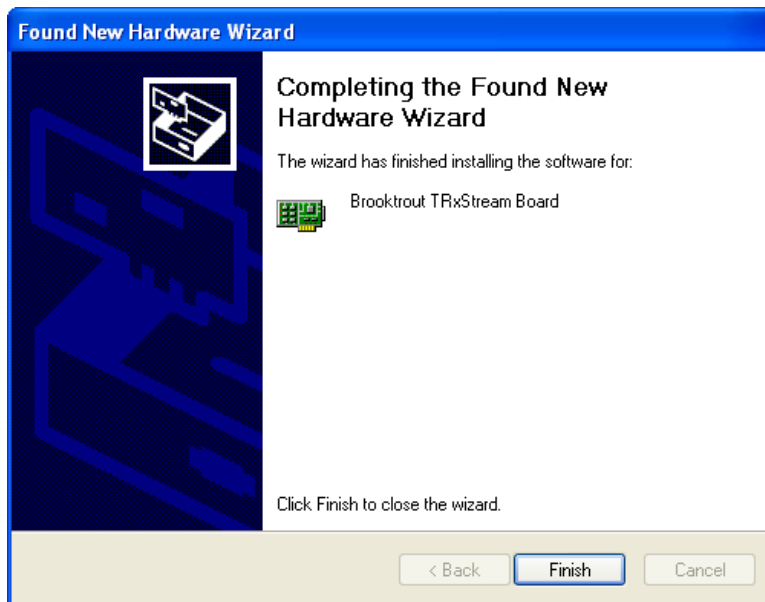


Click Next.

Windows will install the drivers for the Brooktrout board.

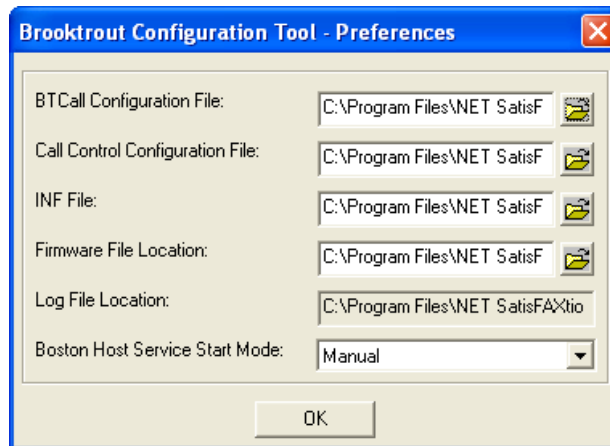


Click Next.



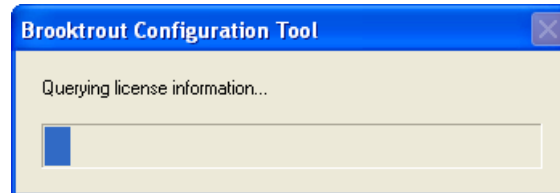
Click Finish.

The Brooktrout Configuration Tool preferences will open. There is no need to change any settings here.



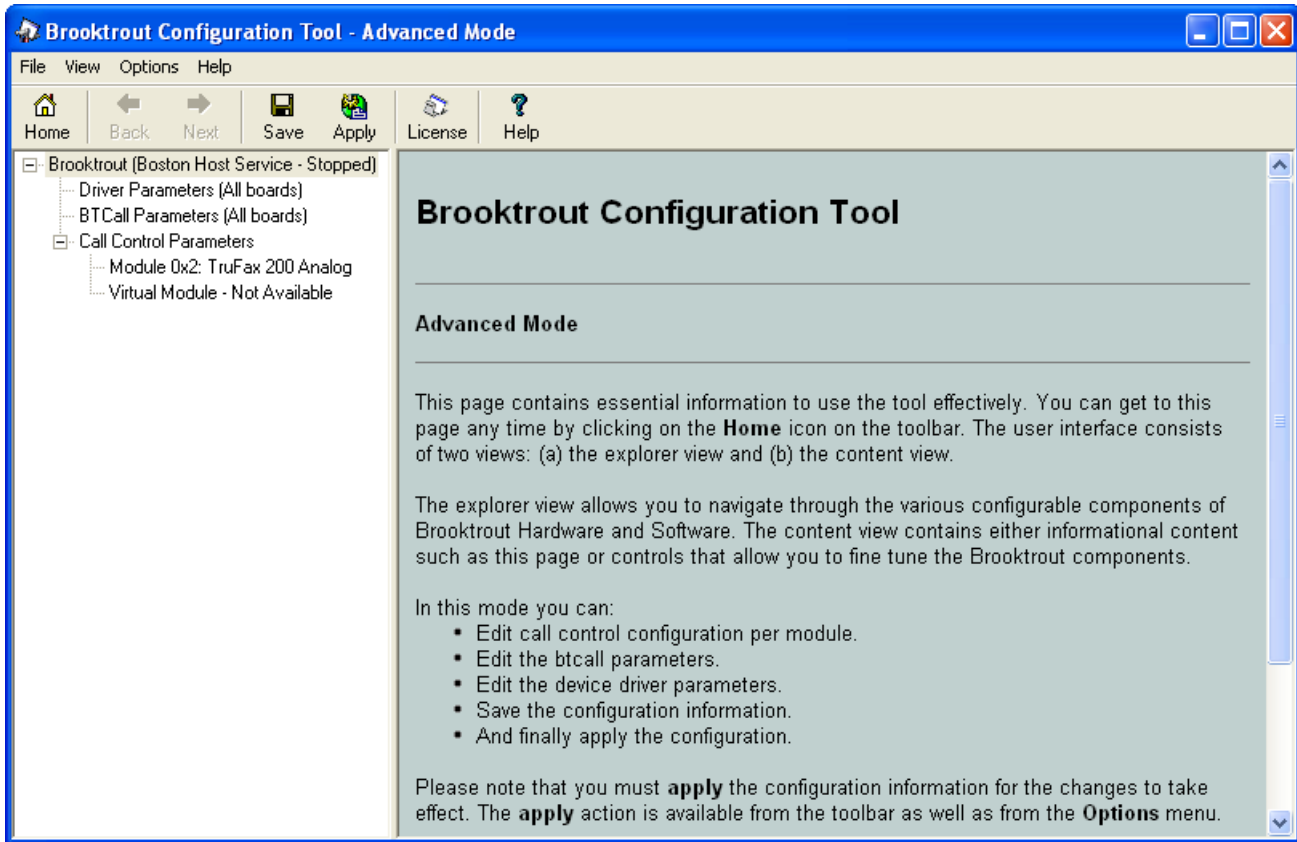
Click OK.

The Brooktrout Configuration Tool will configure itself.

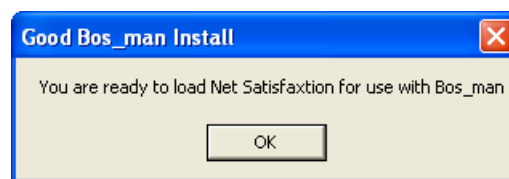


The Brooktrout Configuration Tool will now run. If you are installing a T1, E1 or PRI card, you will need to use the Brooktrout Configuration Tool to configure your card for your line. Doing so is beyond the scope of this document.

If you are installing a card that uses normal telephone lines (Loopstart or POTS), or a DID card, you likely don't need to do any configuration.



Click the Save button in the toolbar, and close the Brooktrout Configuration Tool. You can find it later in your Start menu.



You are now done configuring your Brooktrout TR1034 or Lead-Free (RoHS) TruFax card. Click OK.

Close the Bos\_Man Setup program.



## 5. Loading the NET SatisFAXtion Server and Finishing the Install

You will now load NET SatisFAXtion.

Go to your Start menu, select All Programs, then NET SatisFAXtion. Click on Fax Service (Start & Stop).

You will see a splash screen as the NET SatisFAXtion service loads.



Your installation of NET SatisFAXtion is now complete.

Your web browser will now open the NET SatisFAXtion LaunchPad. The LaunchPad is web site running on the NET SatisFAXtion server and provides a central location to install all the additional NET SatisFAXtion client software as well as other server software.

**FaxBack** VoIP Fax Solutions

**NET SatisFAXtion™**  
LaunchPad

NET SatisFAXtion version 8.6.5253.547 • Server ID 676889

**HOME**

**User Tools**

**Admin Tools**

**Docu-  
mentation**

**Support**

## Welcome to the LaunchPad!

Your LaunchPad web page is: **http://bgptest**

This is the LaunchPad, a central location for documentation and additional software. It runs on your fax server. **Make a note of this URL**, you will be coming back here frequently as you get your NET SatisFAXtion server configured.

### What's Next

To help you configure your NET SatisFAXtion server for the first time, we've provided a Post-Install Checklist. Simply follow the steps and you will have a fully functioning fax server in no time. [Continue to the checklist >>](#)

Make a note of the URL indicated by the arrow above. This is the location of the LaunchPad. You will need this URL later to install client software.

You can also install an email gateway at this time, if you are licensed to do so. For installation assistance with the email gateways, please refer to the documentation on your LaunchPad and <http://www.faxback.com/support/>.

For additional documentation on configuring and managing your NET SatisFAXtion server, please refer to the Administration guide. It can be accessed from the LaunchPad.

You can now load NET SatisFAXtion. Click on your Start menu, All Programs, NET SatisFAXtion, Fax Service (Start & Stop). Please return to the previous section.