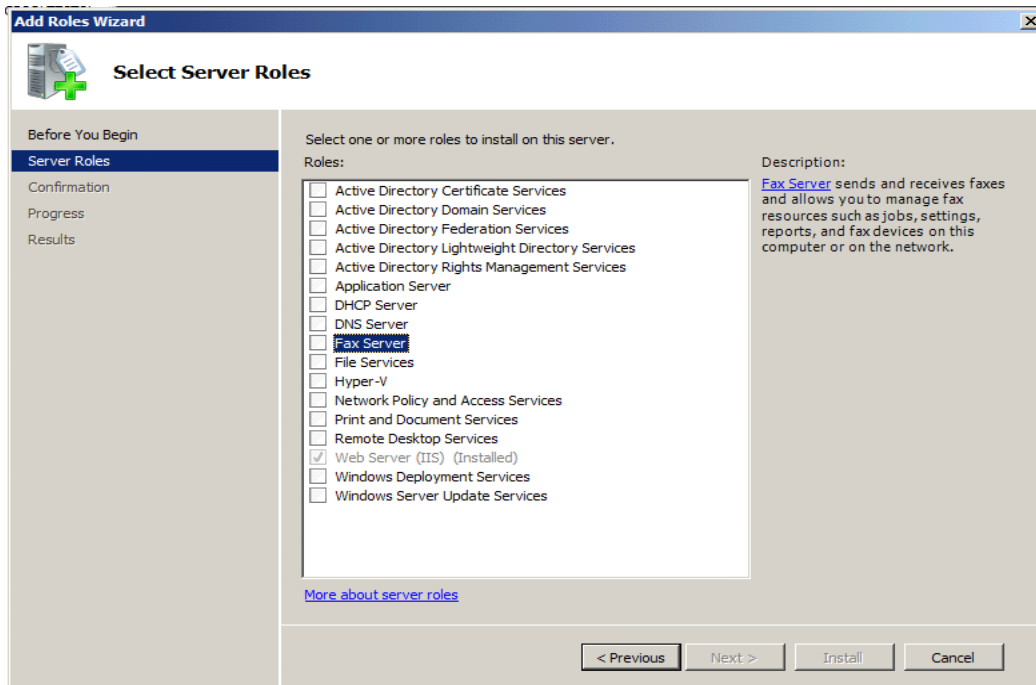


Microsoft Fax Connector Configuration Guide

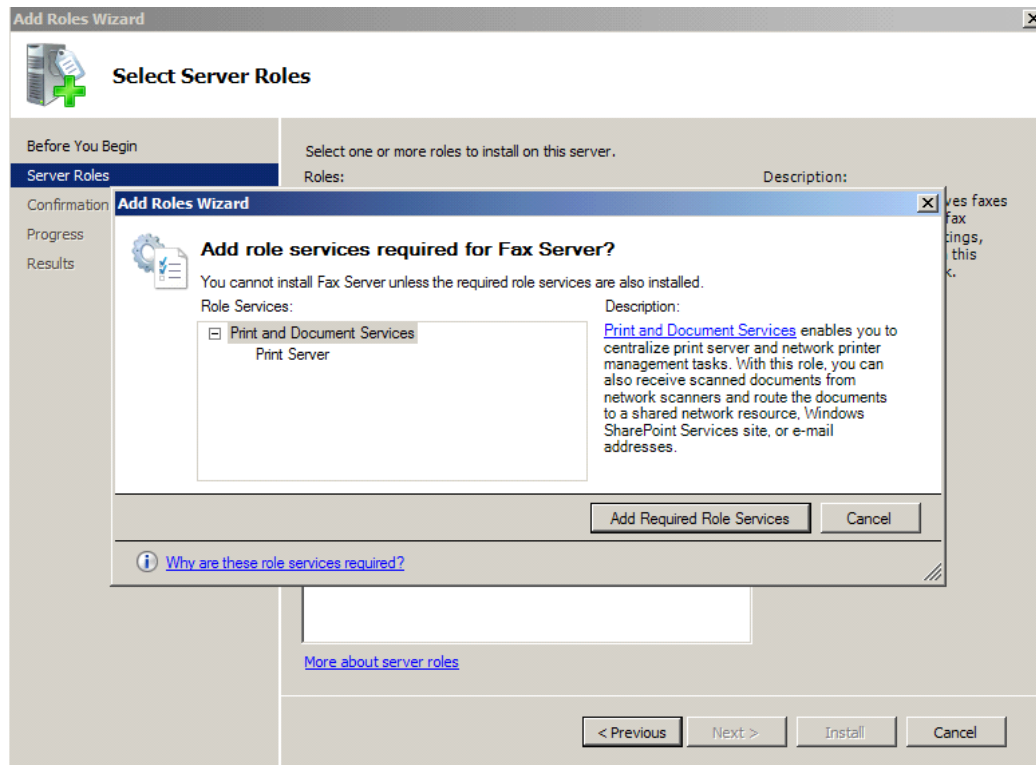
For Windows Server 2008 R2



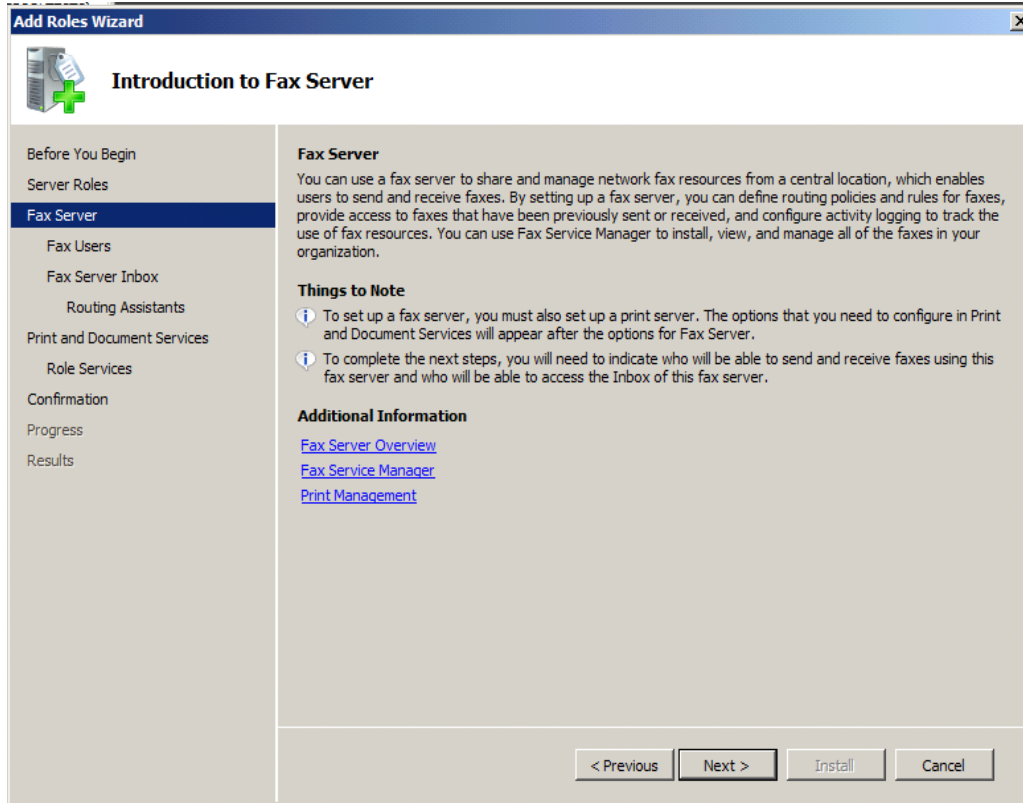
Bring up the Server Manager and choose to add a role.



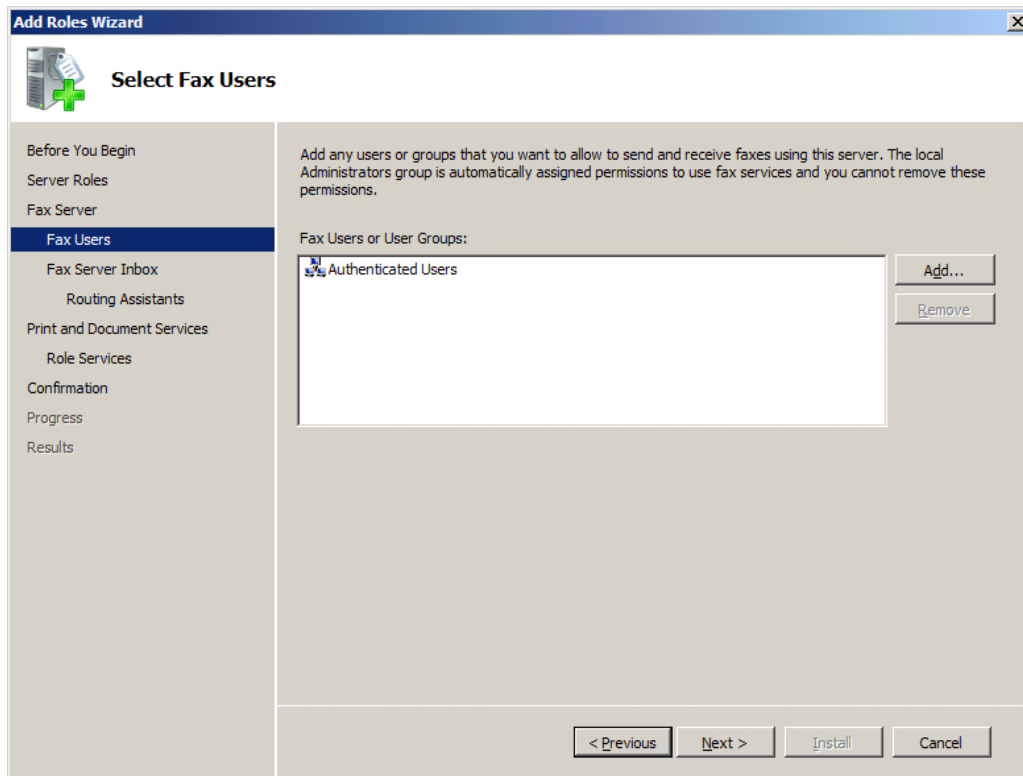
Choose the Fax Server role.



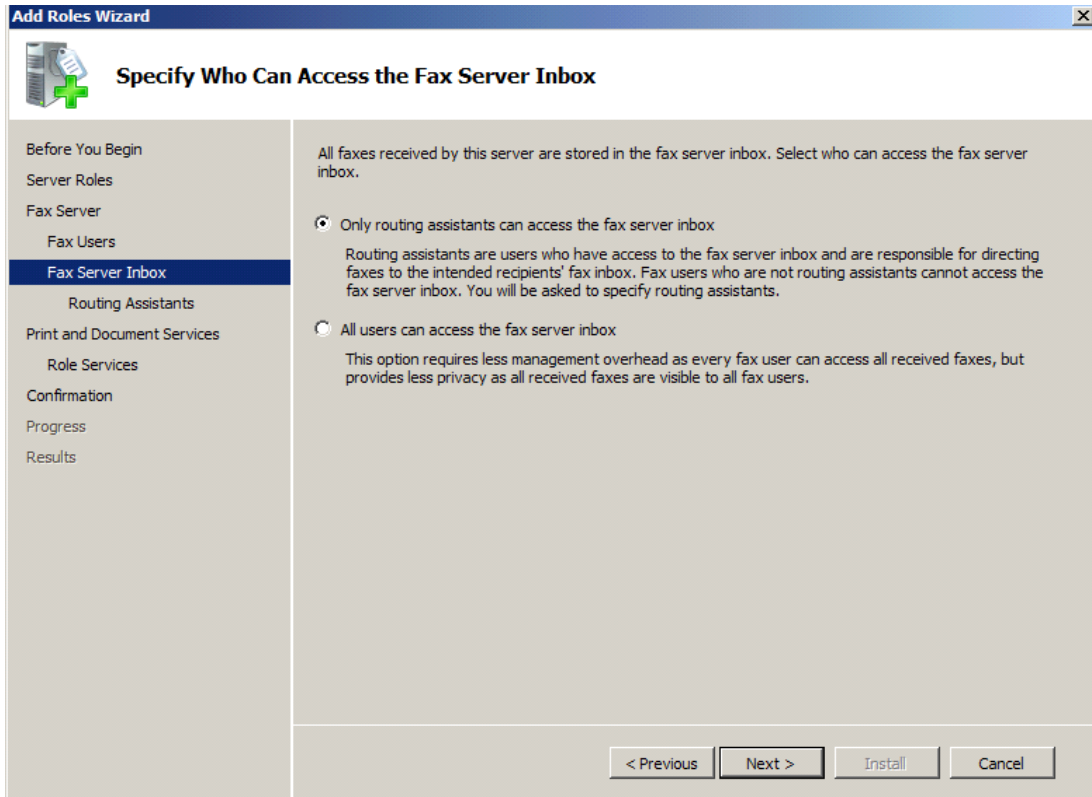
It will automatically try and add the Print and Document Services – Print Server Role. This is required as well. Accept those and click next. It will bring up the screen telling you more about the Fax Server role.



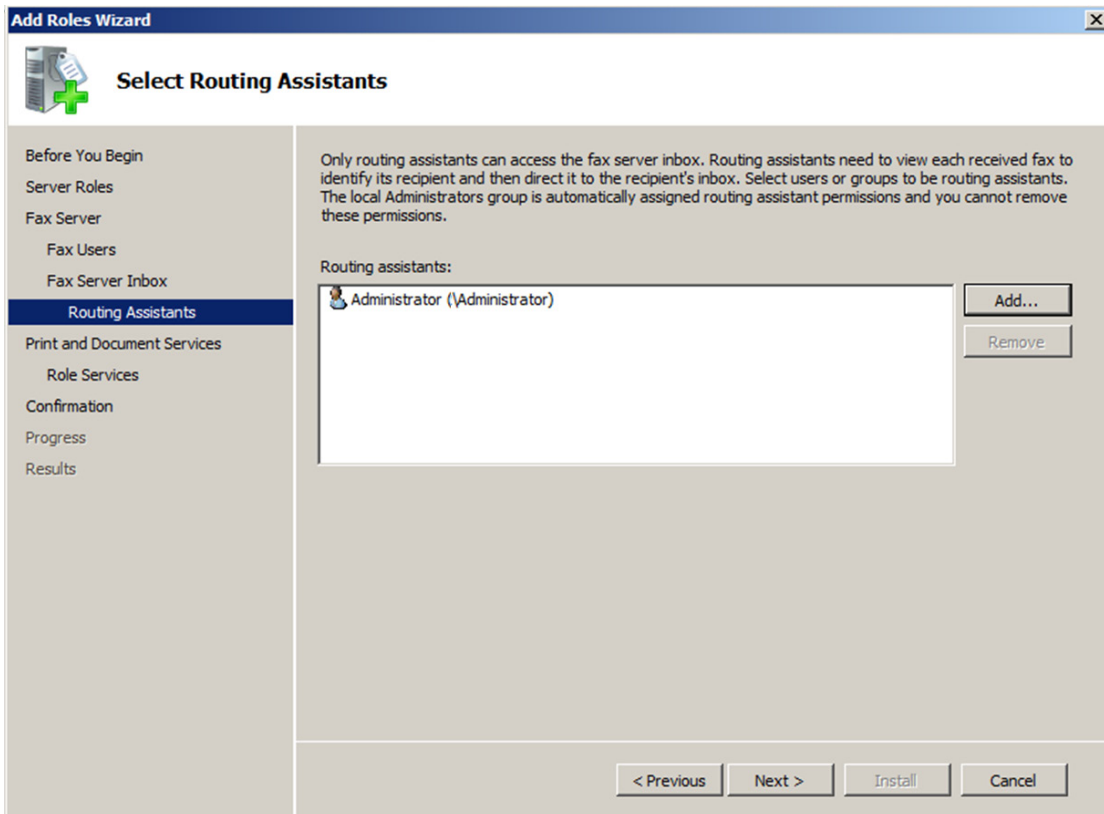
Click next again to move on to select fax users. This lets you choose who will be allowed to use the fax services. You can add any user or group here.

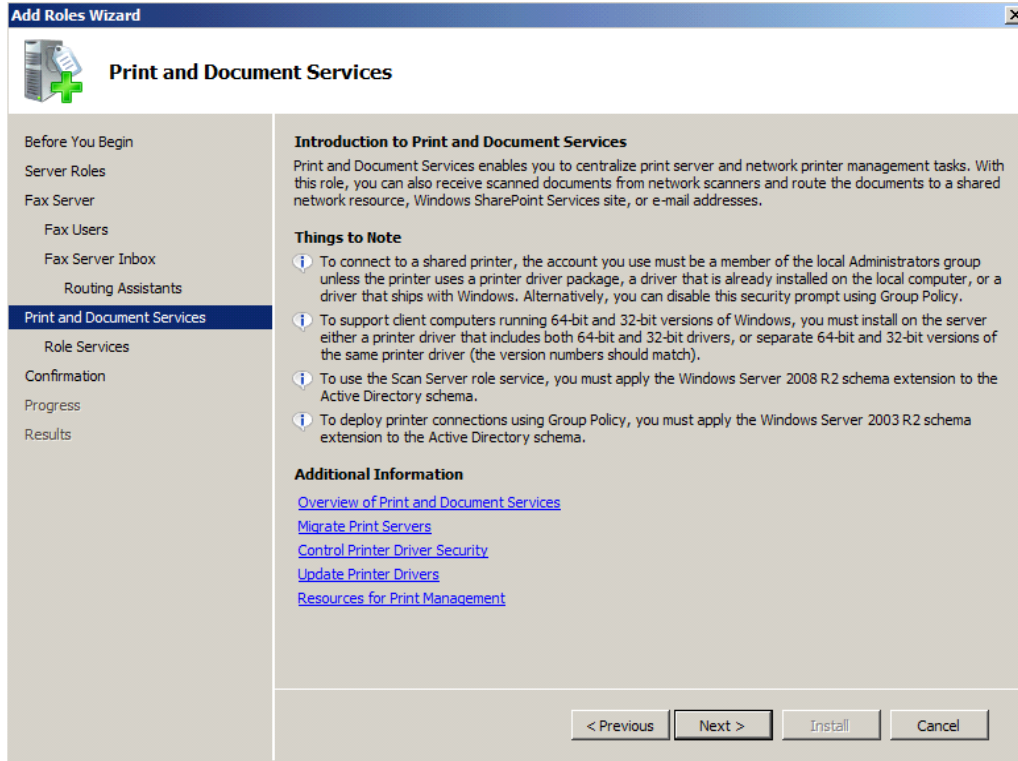


After choosing the users you want to be able to use the fax services, click next. This screen allows you to choose who can see the inbox.



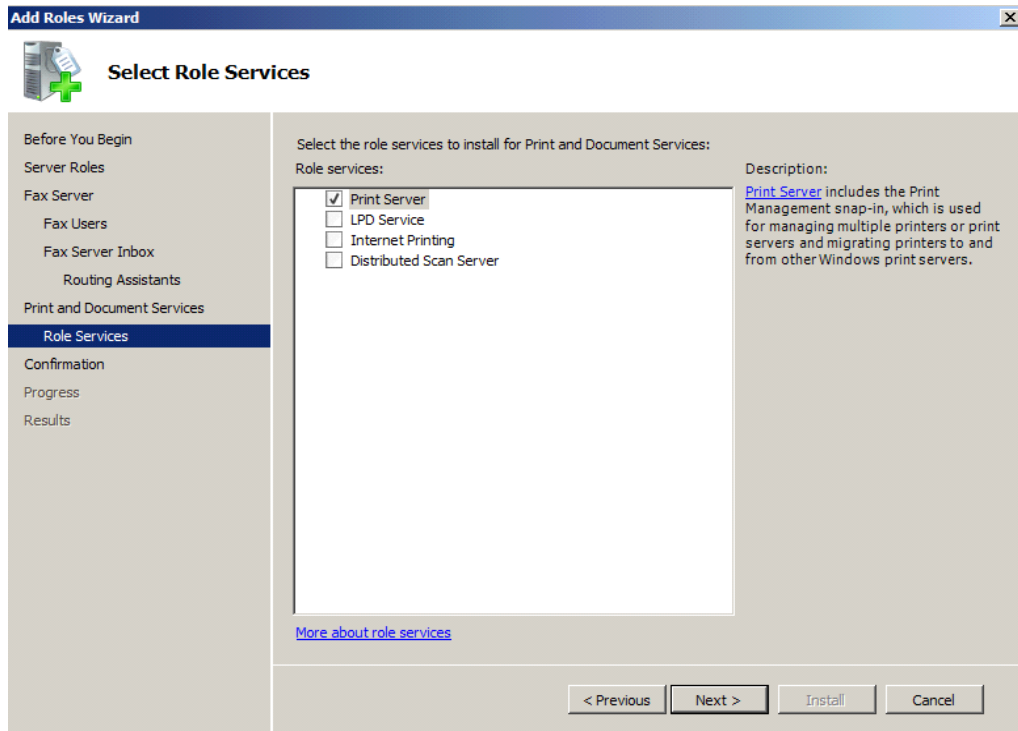
If you choose to only have routing assistants able to access the inbox you will have to configure that on the next screen.



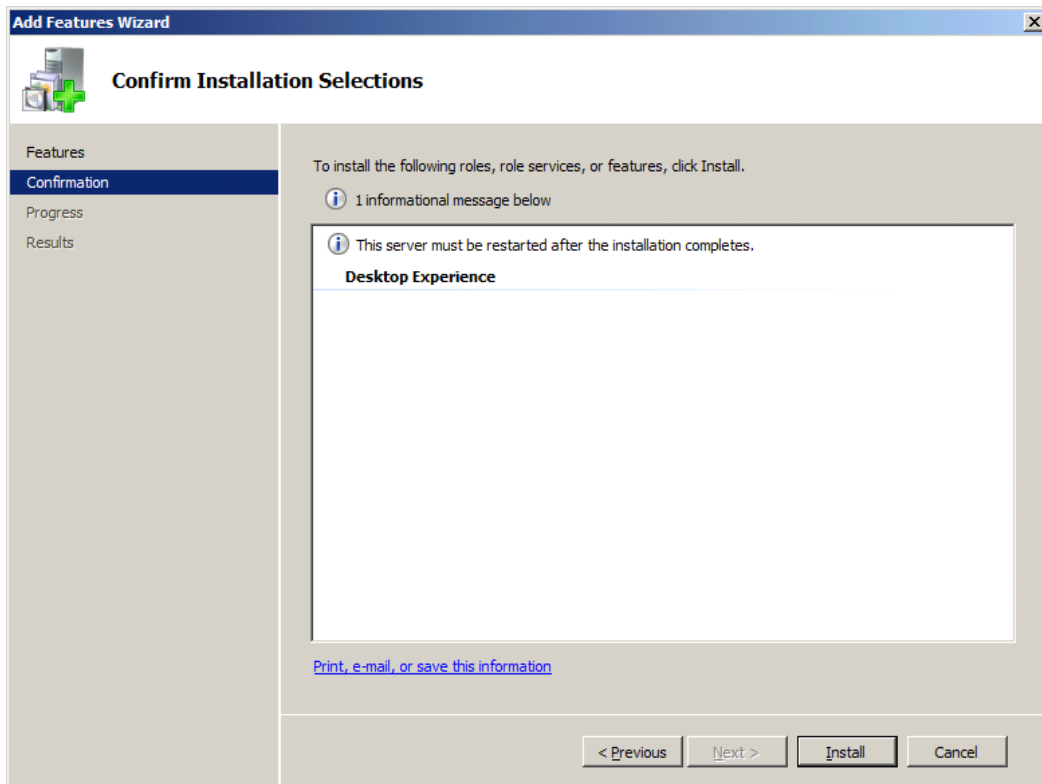
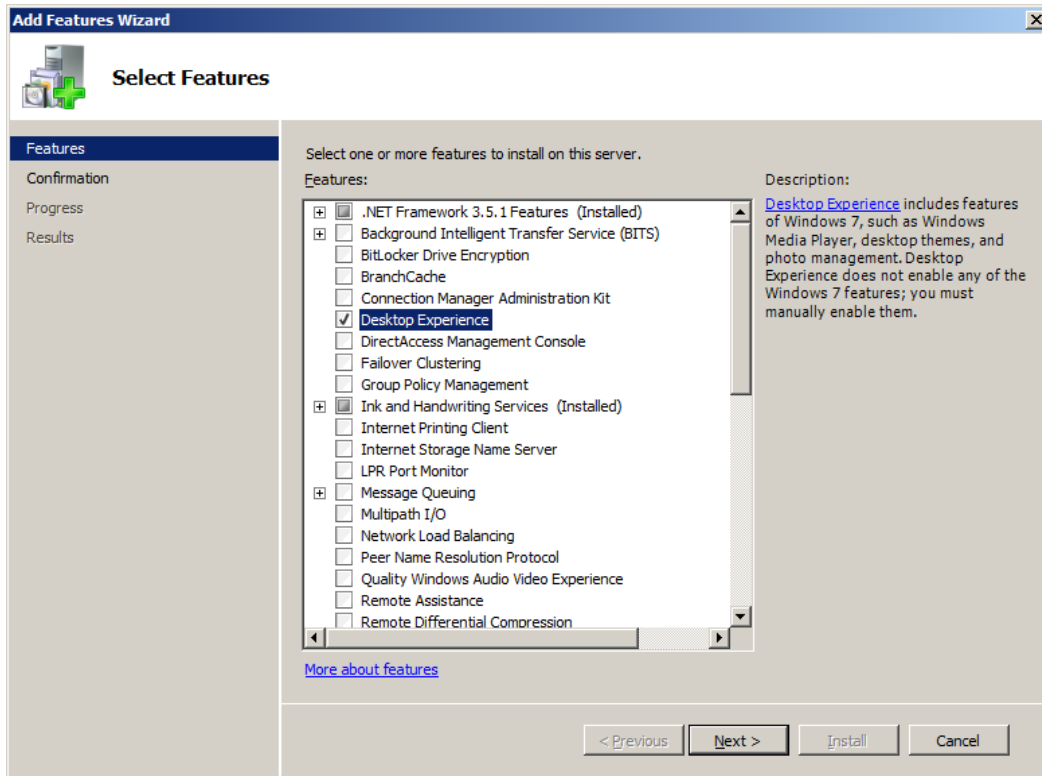


After the fax services are configured it will start the Print and Document services install. Click next.

The only print service you need is the Print Server. Click Next.

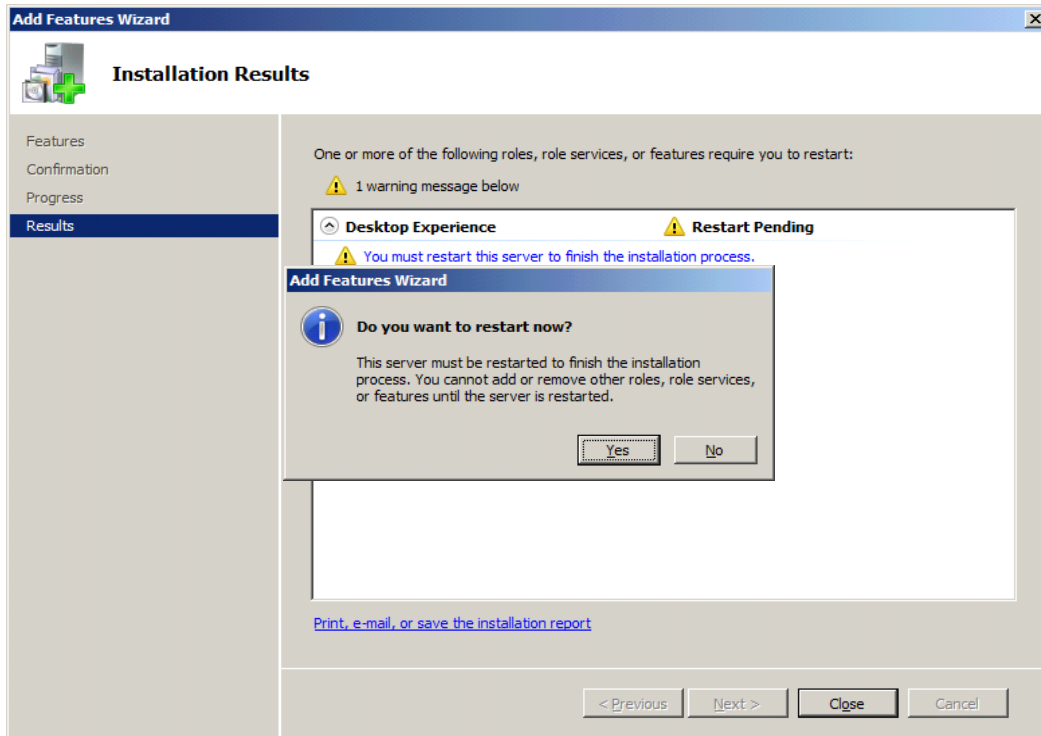


When the roles have been installed, the Desktop Experience feature needs to be added to have the Windows Fax and Scan program available. The Desktop Experience can be found under the Add Features.

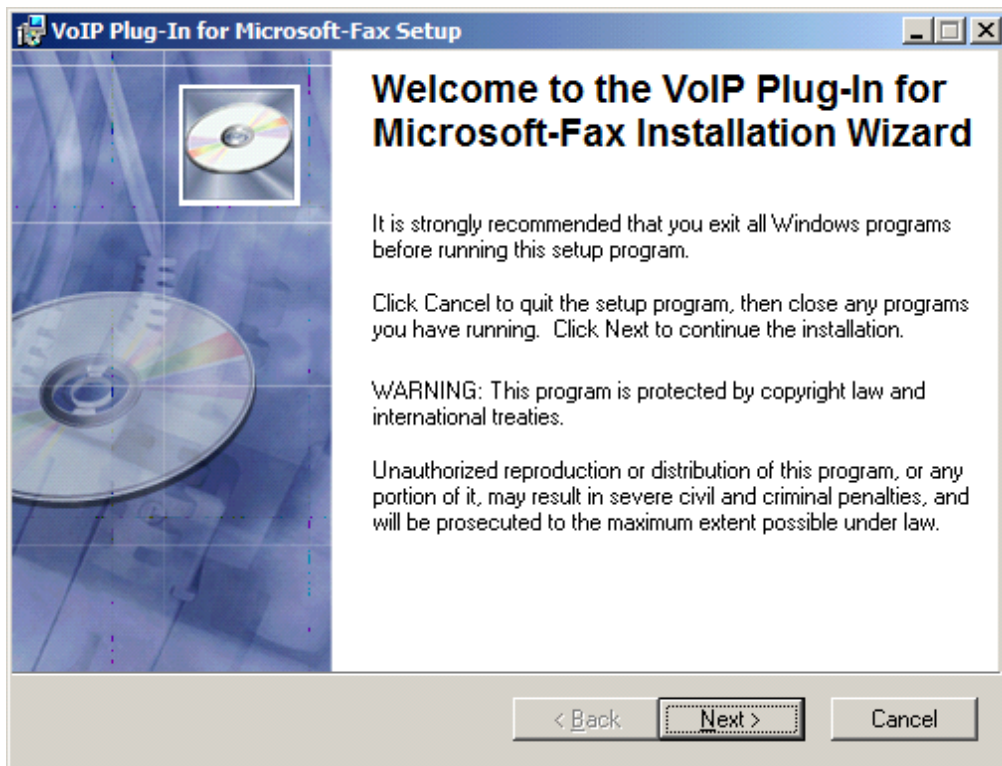


Click next then click install to begin installation of the Desktop Experience

After it is finished installing, you will be asked to reboot.



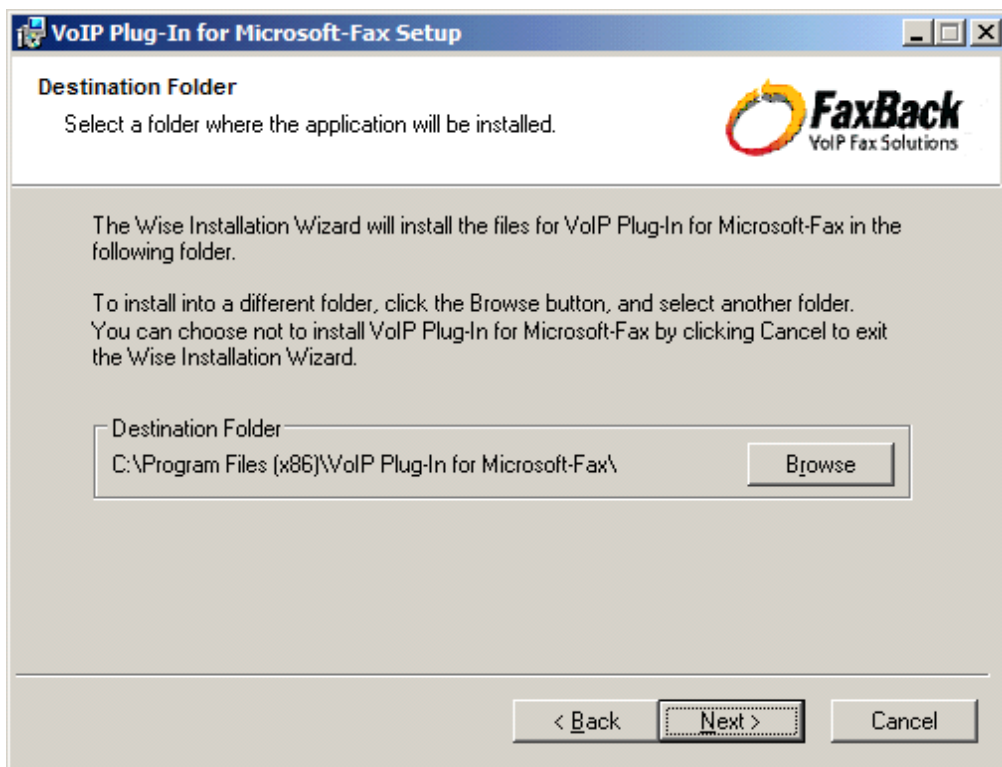
Once the reboot has completed you are ready to go through the installation for the VoIP Plug-In for Microsoft-Fax. Run the install MSI and click next to begin the install.



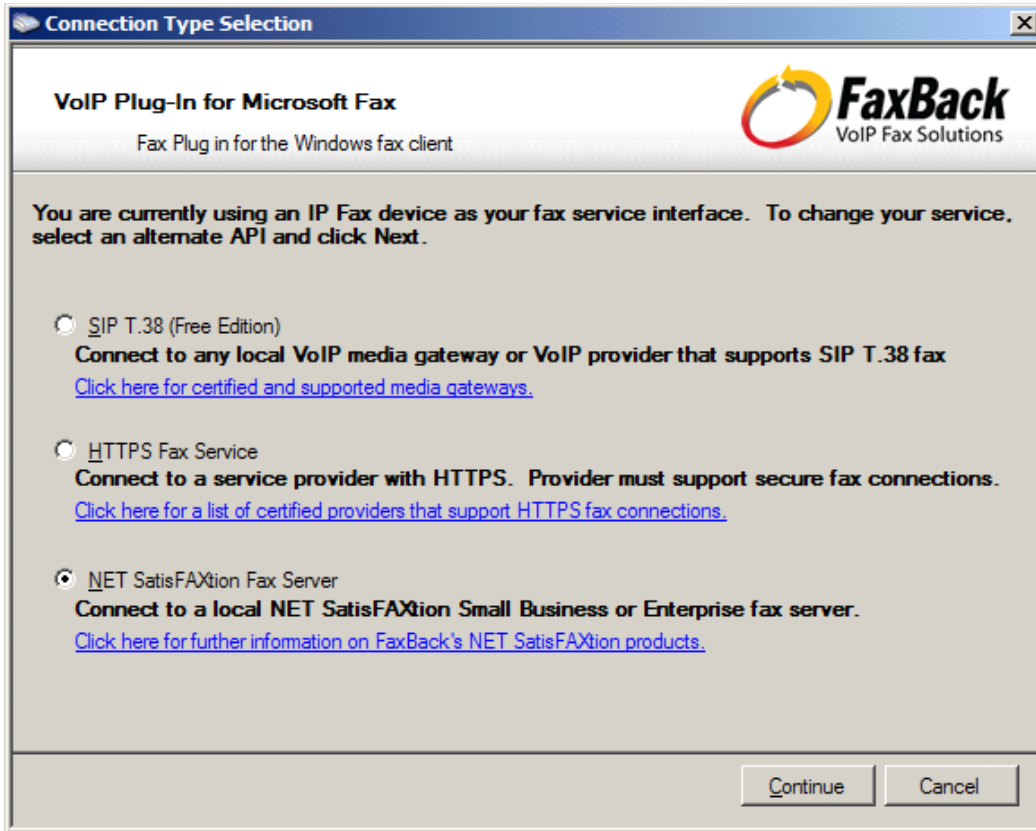
Fill in the user information and who is allowed to use the application and click next.



After choosing the installation directory, click next.



Once the installation is complete you will be presented with a screen asking for the type of connection. Choose the correct type and click continue.



After clicking continue, click next to begin the configuration process. When it asks for your user name and password, click the “Show advanced settings” option.

VoIP Plug-In for Microsoft Fax Installation

VoIP Plug-In for Microsoft Fax
Fax over IP Plug-in for the Windows fax client

 **FaxBack**
VoIP Fax Solutions

Enter your fax server user name and password:

User name:

Password:


[Show advanced settings](#)

< Back Next > Cancel

The advanced options will allow you to fill out the server information. The Fax Server field will be the web address of the fax server. The Fax Domain must be in all caps and is \\NETSATISFAXTION\<>SERVERNAME>

VoIP Plug-In for Microsoft Fax Installation

VoIP Plug-In for Microsoft Fax
Fax over IP Plug-in for the Windows fax client

 **FaxBack**
VoIP Fax Solutions

Enter your fax server user name and password:

User name:

Password:

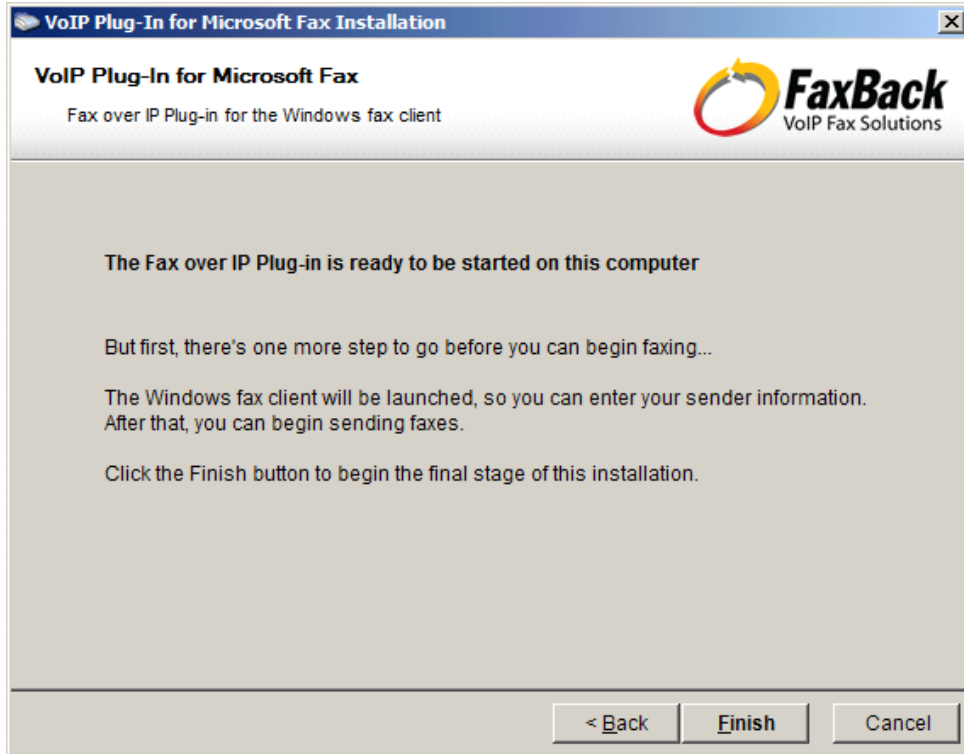
[Hide advanced settings](#)

Fax Server:

Fax Domain:

< Back Next > Cancel

After the information is entered correctly, click next and then click finish. The plug-in is now configured and installed on the system.



The final step is Windows Fax and Scan. Test sending a fax to verify functionality.

